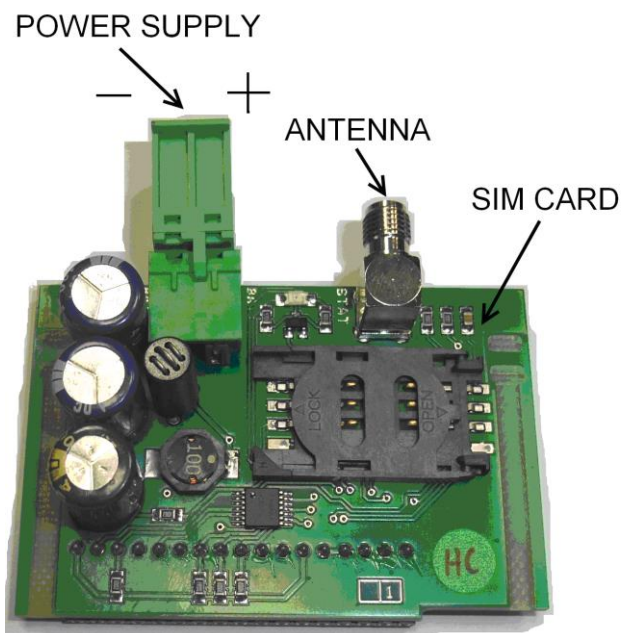


Short guide how to start using IL-NT-GPRS module

CAUTION!:

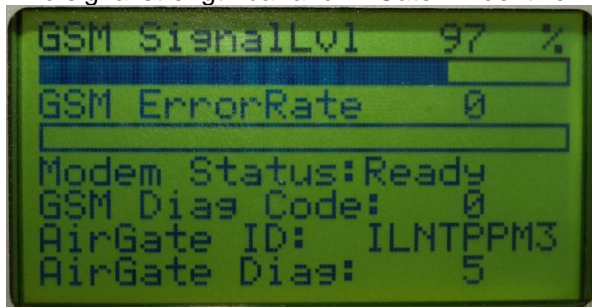
Any manipulation with plug-in module shall be done with disconnected power supply to both controller and module. Power supply shall be switched on also is same time to both module and controller. Fail to follow these instructions (power supply active only in controller or only in module) can lead to module or controller failure!



1. You will need one of supported ComAp controllers (IL-NT/IC-NT/ID-Lite), IL-NT-GPRS, antenna, SIM card with GPRS service and optionally IL-NT-RS232 or IL-NT-S-USB module. Firmware supporting IL-NT-GPRS module is IL-NT 2.0 or IL-NT-WSUP or selected customer branches (contact support@comap.cz for details). It is available here: <http://www.comap.cz/products/detail/IL-NT-GPRS/support/software/>
2. Contact SIM card operator for getting GPRS APN (APN = Access Point Name) name, username and password. Some operator's APNs are listed here: <http://www.quickim.com/support/gprs-settings.html#Australia> or here: http://www.hw-group.com/products/HWg-Ares/HWg-Ares_GSM_APN_en.html
Example: APN Name = internet.t-mobile.cz, UserName = [blank], Password = [blank].
3. Make sure SIM card does not require PIN code. If it does, it is possible to disable it in any common network unlocked mobile telephone.
4. Power up the ComAp controller.
5. Enter correct APN Name, APN UserName and APN UserPass in controller's setpoint group Comms Settings. Set COM1 Mode = DIRECT. Comms settings as every setpoint group are accessible by PAGE button from any measurement screen on controller. Setpoints can be set on controller's front panel keyboard or by LiteEdit 4.5 and higher.
6. Switch off ComAp controller.
7. Place the SIM card into slot on IL-NT-GPRS card, plug in the IL-NT-GPRS card into communication slot on back side of ComAp controller.
8. Connect the antenna to designated SMA connector.
9. Connect power supply to IL-NT-GPRS module. It supports 8-36V DC voltage.
10. Power up the system (Controller and module together).

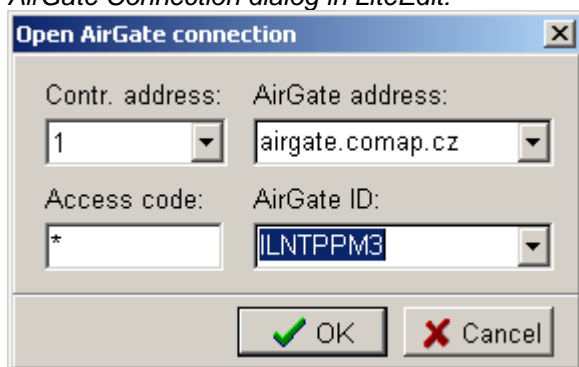
IL-NT-GPRS Quick Guide / ©ComAp – May 2015 / IL-NT-Quick Guide 5-2015.pdf

11. Wait for approx 2 - 4 minutes for first connection of the system to AirGate. AirGate will generate automatically the AirGate ID value. Then navigate to last of measurement screens where you will find signal strength bar and AirGate ID identifier.

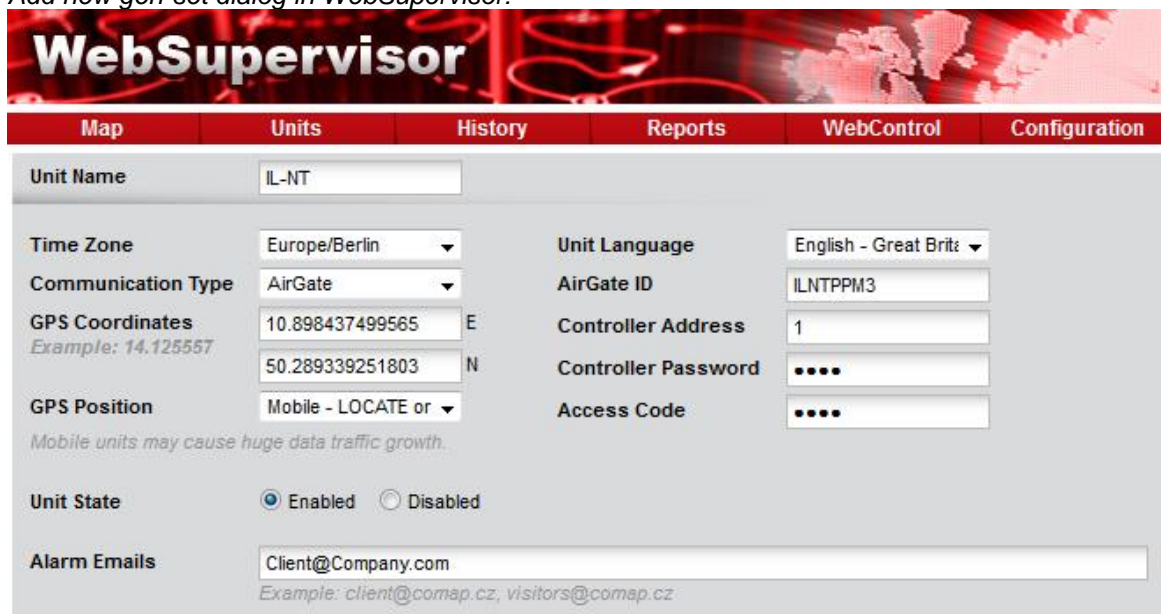


Once this AirGate ID is displayed, connection via AirGate was successful. This value will be needed for LiteEdit or WebSupervisor connection. Kindly make a note for future reference.

AirGate Connection dialog in LiteEdit:



Add new gen-set dialog in WebSupervisor:



Should you encounter any troubles with connection, check the faultcodes on the same screen and find detailed description in Diagnostic codes listed lower.

12. Open LiteEdit PC software or enter your WebSupervisor account at <http://websupervisor.comap.cz>.

Hint: For opening a new WebSupervisor account kindly send e-mail to admin.websupervisor@comap.cz your Name, Login name, E-mail address and Timezone. We will create free account for you. Details at: <http://www.comap.cz/products/detail/WebSupervisor>.

Communication is now ready for use.

Hint: To reduce the data traffic over GPRS network you can set in setpoint group „Comms Settings“ the parameter „AirGate IP“ = 80.95.108.26. This will save significant data amount needed for translation of Airgate server IP address. In case of changing the server IP address this settings has to be updated or returned to default „airgate.comap.cz“.

Hint: From it's nature the GPRS connection can from time to time drop for a short time due to a number of reasons affecting the cellular network. However the system is designed in the way that controller will automatically reconnect back.

Warning: All manipulations with IL-NT-GPRS module has to be done with DC power supply switched off. Module can be only powered on while plugged in the controller and together with controller!



- GSM Diag Code – Diagnostic code for IL-NT-GPRS modem

Table of Diagnostic Codes:

Code	Description
0	OK. No error.
1	Not possible to hang up.
2	IL-NT-GPRS is switched off
3	IL-NT-GPRS is switched on
4	IL-NT-GPRS – error in initialization
5	IL-NT-GPRS – not possible to set the APN
6	IL-NT-GPRS – not possible to connect to GPRS network
7	IL-NT-GPRS – not possible to retrieve IP address
8	IL-NT-GPRS – not accepted DNS IP address
9	Error in modem detection
10	Error in initialization of analog modem
11	SIM card is locked (Possibly PIN code required, PIN needs to be deactivated) or unknown status of SIM locking
12	No GSM signal
13	Not possible to read the SIM card parameters
14	GSM modem did not accepted particular initialization command, possibly caused by locked SIM card
15	Unknown modem
16	Bad answer to complement initialization string
17	Not possible to read GSM signal strength
18	CDMA modem not detected
19	No CDMA network
20	Unsuccessful registration to CDMA network
23	Controller couldn't detect IL-NT GPRS module communication speed
24	No power supply

IL-NT-GPRS Quick Guide / ©ComAp – May 2015 / IL-NT-Quick Guide 5-2015.pdf

- AirGate Diag – Diagnostic Code for AirGate connection

Table of Diagnostic Codes:

Code	Description
0	Waiting for connection to AirGate Server
1	Controller registered, waiting for authorization
2	Not possible to register, controller blacklisted
3	Not possible to register, server has no more capacity
4	Not possible to register, other reason
5	Controller registered and authorized

Note:

ComAp believes that all information provided herein is correct and reliable and reserves the right to update at any time. ComAp does not assume any responsibility for its use unless otherwise expressly undertaken. Some of IntelliLite functions are subject of changes depend on SW version. The data in this manual only describes the product and are not warranty of performance or characteristic.